

Beam profiler for large diameter and high power

LaseView-LHB

- Maximum diameter : 50 mm x 50 mm
- Maximum input power : 100 W/cm²
- Including software and camera
- Beam diameter measurement, analysis functions and auto-range adjustment are available



Image/LaseView-LHB

Composition

- Software
- Power adapter
- Laser beam receiving
(including CCD camera)

Price and lead time

Price: USD 14,800 (Ex-works Japan)
(without Tax)

Lead time: Around 1 - 1.5 months
after order receipt

Operational conditions

- Windows Vista SP1
 - Windows 7
 - Windows 8, Windows 8.1
 - Windows 10
- Operation is not always guaranteed on PC with above Windows OS.

For further product information,

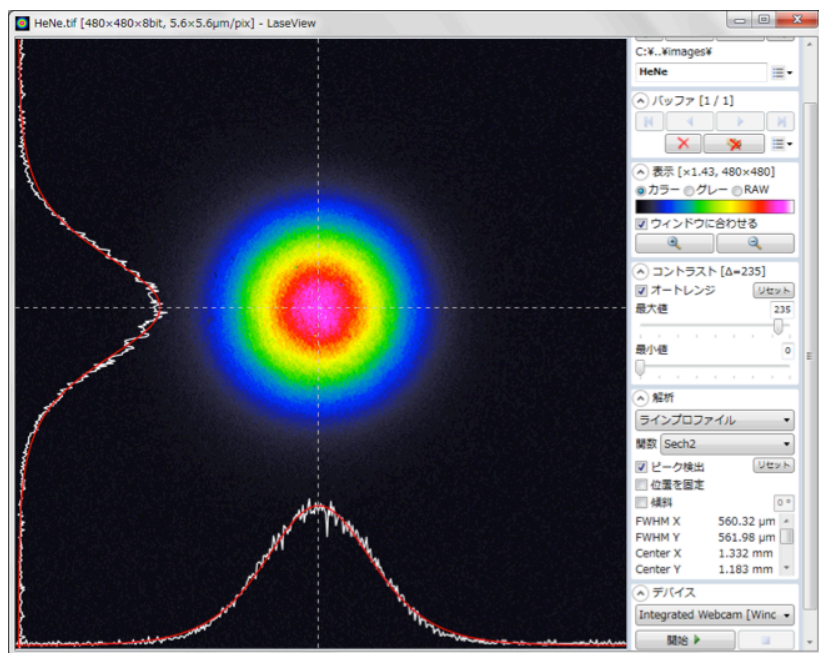
<http://en.symphotony.com/pick-upproductsbeam-profiler-for-large-diameter-andhigh-power/>

This is a beam profiler for large diameter and high power. Beam profile is addressable only by introducing laser into LaseView-LHB. Laser with low power (1 mW/cm²~) is also available. LaseView is included as software and various analysis functions make LaseView-LHB useful.

Application

- Laser processing and laser microscope
- OCT
- Development for laser light source
- THz wave generation
- Evaluation for material property
- Education and training on laser

Analysis functions



- Line profile
- Integration profile
- Maximum intensity projection
- Point - point distance
- Peak integration

	Specification
Measurement for acceptance surface	50 × 50 mm
Optics resolution	100 μm
Measurement power density	0.1 ~ 100 W/cm ² (detection is adjustable depending on exposure time) (1 mW/cm ² ~ is available by changing ND filter)
Total irradiation power	Maximum 10 W
Measurement wavelength range	400 ~ 1100 nm (Adjustment already made on 532 nm or 932)

- * Maximum 100 mm x 100 mm beam diameter is available.
- * Infrared wavelength region is measurable by custom.

For further information,