

Beam profiler for large diameter and high power

LaseView-LHB

- Maximum diameter : 56 mm x 42 mm
- Maximum input power : 100 W/cm²
- Including software and camera
- Beam diameter measurement, analysis functions and auto-range adjustment are available



Image/LaseView-LHB

Composition

- Software
- Power adapter
- Laser beam receiving
(including CCD camera)

Price and lead time

- Price: USD 20,700
(Ex-works Japan)
(without Tax)
- Lead time: Around 1 - 1.5 months
after order receipt

Operational conditions

- Windows XP SP3, Vista SP1
- Windows 7, 8 and 8.1

Operation is not always guaranteed on PC with above Windows OS.

For further product information,

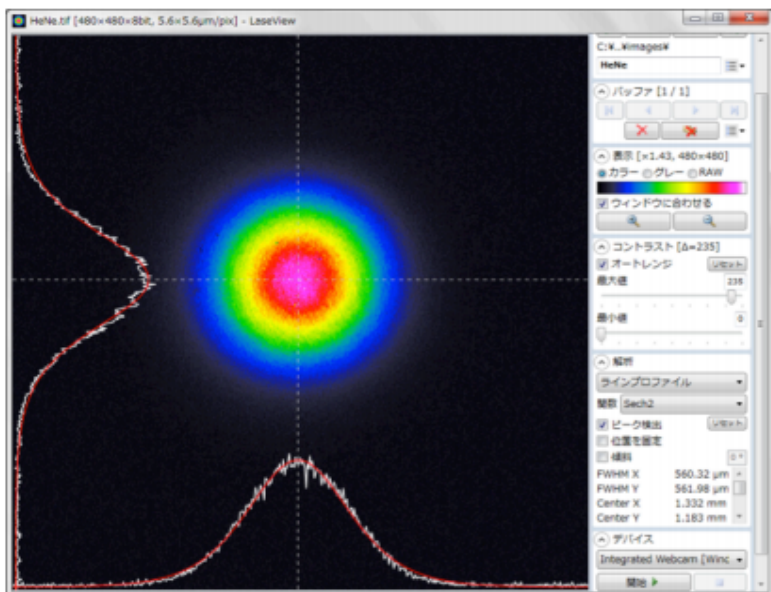
<http://en.symphotony.com/pick-up-productsbeam-profiler-for-large-diameter-and-high-power>

This is a beam profiler for large diameter and high power. Beam profile is addressable only by introducing laser into LaseView-LHB. Laser with low power (1 mW/cm²~) is also available. LaseView is included as software and various analysis functions make LaseView-LHB useful.

Application

- Laser processing and laser microscope
- OCT
- Development for laser light source
- THz wave generation
- Evaluation for material property
- Education and training on laser

Analysis functions



- Line profile
- Integration profile
- Maximum intensity projection
- Point - point distance
- Peak integration

Specification

Measurement for acceptance surface	60 x 38 mm
Optics resolution power	100 μm
Measurement power density	0.1 ~ 100 W/cm ² (detection is adjustable depending on exposure time) (1 mW/cm ² ~ is available by changing ND filter)
Total irradiation power	Maximum 10 W
Measurement wavelength range	400 ~ 1100 nm (Adjustment already made on 532 nm or 932)

Maximum 100 mm x 100 mm beam diameter is available.
Infrared wavelength region is measureable by custom.

For further product information,

Kokyo

Kokyo, Inc.

No.5 Hase Bldg. 2F, 637, Suiginicho, Shimogyo-ku, Kyoto-shi,
Kyoto, 600-8411, Japan

Email : info@symphotony.com TEL : 81-70-6582-2430