

Beam profiler for large diameter and high power

LaseView-LHB-100

- Maximum diameter : 100 mm x 100 mm
- Maximum input power : 100 W/cm²
- Including software and camera
- Beam diameter measurement, analysis functions and auto-range adjustment are available



Image / LaseView LHB-100

Composition

- Software
- Power adapter
- Laser beam receiving
(including CCD camera)

Price and Lead time

Price: USD 19,800 (Ex-works Japan)
(without Tax)

Lead time: Around 1-1.5 months after
order receipt

Operational conditions

- Windows 7
- Windows 8、Windows 8.1
- Windows 10

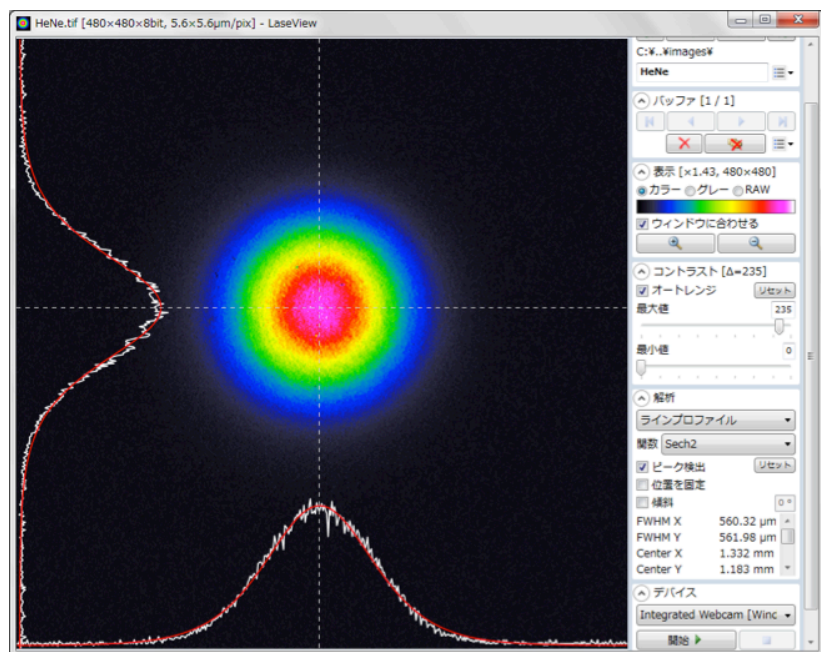
Operation is not always guaranteed on PC
with above Windows OS.

This is a beam profiler for large diameter and high power. Beam profile is addressable only by introducing laser into LaseView-LHB. Laser with low power (1 mW/cm²~) is also available. LaseView is included as software and various analysis functions make LaseView-LHB useful.

Application

- Laser processing and laser microscope
- OCT
- Development for laser light source
- THz wave generation
- Evaluation for material property
- Education and training on laser

Analysis functions



- Line profile
- Integration profile
- Maximum intensity projection
- Point – point distance
- Peak integration

Specification

Measurement for acceptance surface	100 mm × 100 mm
Optics resolution power	Around 200 μm (at center of acceptance surface)
Measurement power density	0.1 ~ 100 W/cm ² (detection is adjustable depending on exposure time) (1 mW/cm ² ~ is available by changing ND filter)
Total irradiation power	Maximum 10 W
Measurement wavelength range	400 ~ 1100 nm (Adjustment already made on 532 nm or 1060 nm)

* Infrared region is also measurable.

For further information,

<https://en.symphotony.com/products/laseview/>